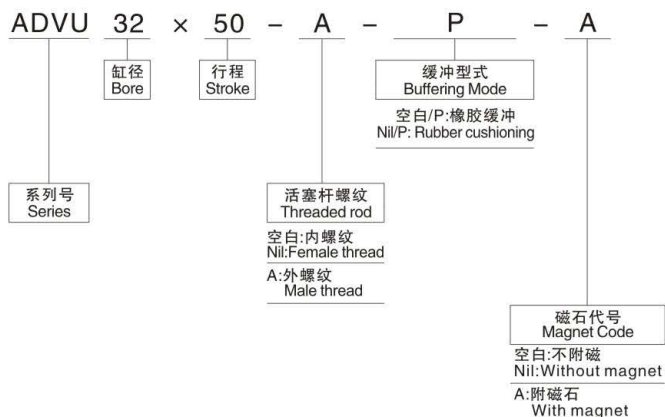


紧凑型气缸 Compact cylinder

ADVU系列 ADVU Series



订货型号 Order Code



技术参数 Technical Specification

缸径(mm) Bore Size	12	16	20	25	32	40	50	63	80	100
动作型式 Acting Mode	复动型 Double Acting									
工作介质 Working Media	空气(经40 μm过滤的洁净空气) Cleaned Air									
使用压力 Working Pressure	0.1~0.9Mpa(kgf/cm ²)									
保证耐压力 Proof Pressure	1.35Mpa(13.5kgf/cm ²)									
使用温度 Working Temperature	-5~70℃									
缓冲型式 Buffering Mode	垫缓冲 Rubber Cushion									
接管口径 Port Size	M5					G1/8			G1/4	
本体材质 Body Material	铝合金 Aluminum Alloy									

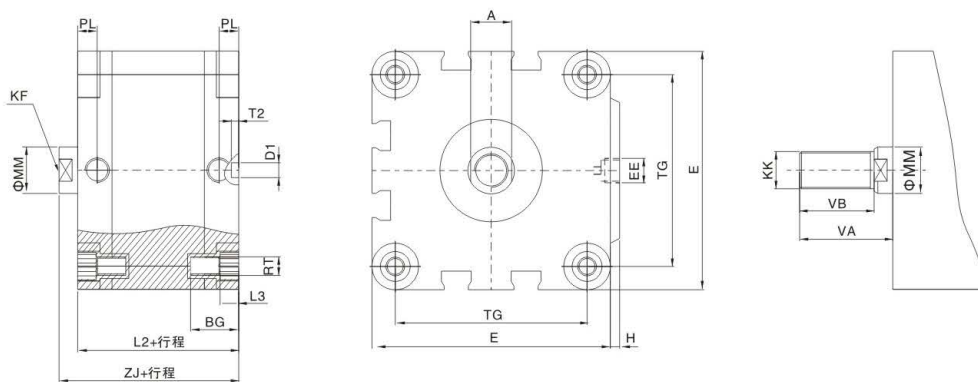
感应开关的选择 Selection Of Sensor Switch

型式 Mode	内径 Bore Size	12	16	20	25	32	40	50	63	80	100
感应开关 Sensor Switch		CS1-M									

气缸行程 Stroke Of Cylinder

缸径 Bore Size (mm)	标准行程(mm) Standard Stroke(mm)										最大行程 Max.Stroke (mm)	容许行程 Allowable Stroke (mm)
	12	5	10	15	20	25	30	35	40	45		
12	5	10	15	20	25	30	35	40	45	50	50	60
16	5	10	15	20	25	30	35	40	45	50	50	60
20	5	10	15	20	25	30	35	40	45	50	80	90
25	5	10	15	20	25	30	35	40	45	50	80	90
32	5	10	15	20	25	30	35	40	45	50	130	150
40	5	10	15	20	25	30	35	40	45	50	130	150
50	5	10	15	20	25	30	35	40	45	50	130	150
63	5	10	15	20	25	30	35	40	45	50	130	150
80	5	10	15	20	25	30	35	40	45	50	130	150
100	5	10	15	20	25	30	35	40	45	50	130	150

外型尺寸 Dimension



代号 Code	A	BG	D1	E	EE	H	L2	L3	MM	PL	RT	T2	TG	VA	VB	ZJ	KK	KF
缸径 Bore Size																		
12	5	18.5	6	29	M5	1	38	3	6	8	M4	4	18	20.5	16	42.5	M6	M3
16	7	18.5	6	29	M5	1	38	3	8	8	M4	4	18	24.5	20	42.5	M8	M4
20	9	18.5	6	36	M5	1.5	38	4	10	8	M5	4	22	26.5	22	42.5	M10×1.25	M5
25	9	18.5	6	40	M5	1.5	39.5	4	10	8	M5	4	26	27.5	22	45	M10×1.25	M5
32	10	21.5	6	50	G1/8	2	44.5	5	12	8	M6	4	32	28	22	50.5	M10×1.25	M6
40	10	21.5	6	60	G1/8	2.5	46	5	12	8	M6	4	42	28.5	22	52	M10×1.25	M6
50	13	22	6	68	G1/8	3	45.5	6	16	8	M8	4	50	31.5	24	53	M12×1.25	M8
63	13	24.5	8	87	G1/8	4	45.5	8	16	8	M10	4	62	31.5	24	57.5	M12×1.25	M8
80	17	27.5	8	107	G1/8	4	56	8	20	8.5	M10	4	82	40	32	64	M16×1.5	M10
100	22	32.5	8	128	G1/4	5	66.5	8	25	10.5	M10	4	103	50	40	76.5	M20×1.5	M12